



# CABINET

24 January 2024

A meeting of the CABINET will be held on Thursday, 1st February, 2024, 6.00 pm in Town Hall, Market Street, Tamworth

## A G E N D A

### NON CONFIDENTIAL

**1 Apologies for Absence**

**2 Declarations of Interest**

*To receive any declarations of Members' interests (pecuniary and non-pecuniary) in any matters which are to be considered at this meeting.*

*When Members are declaring a pecuniary or non-pecuniary interest in respect of which they have dispensation, they should specify the nature of such interest. Members should leave the room if they have a pecuniary or non-pecuniary interest in respect of which they do not have a dispensation.*

**3 Question Time:**

To answer questions from members of the public pursuant to Executive Procedure Rule No. 13

**4 Matters Referred to the Cabinet in Accordance with the Overview and Scrutiny Procedure Rules (Pages 3 - 6)**

*(Report of the Chair of the Infrastructure, Safety and Growth Scrutiny Committee)*

**5 Business Community Connector Scheme (Pages 7 - 34)**

*(Report of the Portfolio Holder for Environmental Health and Community Partnerships)*

**6 Councillor and Community Grants Review (Pages 35 - 50)**

*(Report of the Portfolio Holder for Environmental Health and Community Partnerships)*

Yours faithfully

A handwritten signature in black ink, consisting of a stylized 'A' followed by a long horizontal line that tapers to a point on the right.

**Chief Executive**

---

**Access arrangements**

*If you have any particular access requirements when attending the meeting, please contact Democratic Services on 01827 709267 or e-mail [democratic-services@tamworth.gov.uk](mailto:democratic-services@tamworth.gov.uk). We can then endeavour to ensure that any particular requirements you may have are catered for.*

**Filming of Meetings**

*The public part of this meeting may be filmed and broadcast. Please refer to the Council's Protocol on Filming, Videoing, Photography and Audio Recording at Council meetings which can be found [here](#) for further information.*

*If a member of the public is particularly concerned about being filmed, please contact a member of Democratic Services before selecting a seat.*

**FAQs**

*For further information about the Council's Committee arrangements please see the FAQ page [here](#)*

To Councillors: T Jay, S Smith, T Clements, A Cooper, J Oates, M Summers and  
P Thompson.

1<sup>st</sup> February 2024

**Report of the Chair of the Infrastructure, Safety and Growth Scrutiny Committee**

**Matters referred to Cabinet in accordance with the Overview Rules**

<b>Scrutiny Committee</b>	<b>Title of Matter referred</b>	<b>Date of Scrutiny meeting</b>
Infrastructure, Safety and Growth	Ending Plastic Pollution	17/01/24

**Exempt Information**

None.

**Purpose**

To notify Cabinet of the report and recommendations from the Future High Street Fund item that was discussed at the meeting of the Infrastructure, Safety and Growth Scrutiny Committee on the 1st February 2024.

**Recommendations**

**Following consideration of the item the Committee agree to the following recommendations being made to Cabinet:**

1. Look at the feasibility of a trial to strategically site some dual use bins around the town with ongoing communications to explain and encourage the correct use.

*(Moved by Councillor C Dean and seconded by Councillor B Clarke)*

**Back Ground Information**

Following a petition at Full Council on the 28<sup>th</sup> February 2023, the Committee made the following resolution -

RESOLVED That Council

1. Work towards the elimination of the use of landfill for waste disposal
2. Ensure that in public spaces are clean and free of plastic waste

3. Support education initiatives to better inform the public on how to use recycling facilities and the importance of eliminating plastic waste
4. Facilitate the cooperation of local businesses, residents and local authorities to work together on the elimination of plastic pollution and reduce the use of plastic in Tamworth.

*(Moved by Councillor D Cook and seconded by Councillor M Cook)*

The item was discussed under Matters referred to scrutiny by the Committee on 13<sup>th</sup> September 2023 when they were provided with a response from Steve Gee (Operations Manager, Joint Waste Service) to resolutions 1,2 and 4.

The Committee agreed for the item to be added to the workplan at a later date when Officers from the Joint Waste Service and Street Scene could attend.

### **Executive Summary**

At the meeting of the Infrastructure, Safety and Growth Committee on the 17<sup>th</sup> January 2024 Hannah Peate, Assistant Director for Environment, Culture and Wellbeing and the Operations Manager, Mark Greaves attended to provide a verbal update on the second resolution alongside the report provided at the previous meeting.

The Committee were advised that whilst the Council ensure that all public spaces are clear and litter free, all litter dealt with in the same way including plastics and is incinerated at Lower House Farm rather than via Landfill.

It was discussed that if any new schemes were to be considered that ongoing communication and messages around the issue would be key.

The Committee discussed piloting a scheme to look at multi use bins and moved a resolution to be presented to Cabinet.

### **Options Considered**

None.

### **Key considerations**

1. Scrutiny committees have statutory powers to make recommendations to the Executive, and the Executive (Cabinet) has a statutory duty to respond. They may also make reports and recommendations to external decision-making bodies.
2. The agenda for Executive meetings shall include a standing item entitled 'Matters Referred to the Cabinet In Accordance with the Overview and Scrutiny Procedure Rules'. The reports of overview and scrutiny committees and sub-committees referred to the Executive shall be included at this point in the agenda (unless they have been considered in the context of the Executive's deliberations on a substantive item on the agenda) within one calendar month of the overview and scrutiny committee or sub-committee completing its report/recommendations.

3. Scrutiny recommendations are addressed to the Cabinet, as the main Executive decision-making body of the council (or, where appropriate, an external agency).
4. Cabinet is being asked to note the scrutiny report / recommendations and that an Executive Response to the scrutiny recommendations be prepared for consideration by the Cabinet within two months from receiving the report or recommendations.
5. The minutes of the meeting of the scrutiny committee provide the record of the scrutiny committee's consideration of the issue and the scrutiny recommendations made during the meeting.
6. The scrutiny committee will be notified of the Executive Response made in respect to the scrutiny recommendations and may track the implementation of the Cabinet decisions and any actions agreed. This enables the scrutiny committee to track whether their recommendations have been agreed, what actually was agreed (if different) and review any outcomes arising

### **Report Author**

Carol Dean

Chair of Infrastructure, Safety and Growth Scrutiny Committee

This page is intentionally left blank

## Cabinet

1st February 2024

### Report of the Portfolio Holder for Environmental Health and Community Partnerships

#### Business Community Connector Scheme

#### EXEMPT INFORMATION

None

#### PURPOSE

To consider the Council formally sign up to the Community Together CIC Business Community Connector Scheme.

#### RECOMMENDATIONS

It is recommended that Cabinet:

- **Endorse the Council formally sign up to the Business Community Connector Scheme**
- **Endorse the circulation of the directory for all staff and councillors to signpost to support available in the community**

#### EXECUTIVE SUMMARY

The Business Community Connector Scheme is a new initiative that has been launched by Community Together CIC to recognise the positive impact that local businesses and organisations have in helping address loneliness, isolation and sign posting to essential support services. It is free and simple to sign up.

The scheme has been promoted and developed in conjunction with a wide range of partners by Community Together CIC and is supported by the Partnership team. Community Together CIC will remain the data controller.

Businesses who sign up to the scheme receive:

- A 20-minute sign posting training video that can be shown at a team meeting or watched by team members in their own time.
- A Large and Medium Window sticker to put on display to let their customers know they are part of the scheme.
- A directory of local services to sign post people to which will be updated every quarter by Community Together CIC.
- Community Together CIC will also actively promote those businesses that sign up.

Many Tamworth businesses have already signed up for the scheme, including café's, pubs, hairdressers, barbers, retail outlets, leisure facilities, gyms,

These businesses know their regular customers and have conversations with them and get to know them. They know when people don't come in, or are feeling down or not themselves, in these scenarios if a member of the public discloses for example a recent bereavement, loss of job, wanting some advice and don't know where to turn, then they can use the directory to sign post to an appropriate service.

It is proposed that the Council also pledge to sign up to the Business Connector Scheme as part of our commitment, through our corporate priorities to support the most vulnerable in our communities.

The directory of services developed is a valuable tool for use by staff supporting Tamworth residents, Councillors in the community and for staff to support each other. It also provides an opportunity to assist in the promotion of the scheme to the wider business community and to support our commitment to the voluntary sector organisations who provide such valuable services.

Businesses can sign up by calling Freephone 0808 175 4041 or Community Together CIC Facebook / Twitter Pages, and by visiting the Website [www.communitytogethercic.org.ukn](http://www.communitytogethercic.org.ukn)

## **RESOURCE IMPLICATIONS**

There is no fee to join the Business Community Connector Scheme. This is a FREE scheme.

There will be no resources required from TBC to maintain/update the directory as this will be undertaken by Community Together CIC on a quarterly basis.

## **LEGAL/RISK IMPLICATIONS BACKGROUND**

There are no staffing, community/performance planning, sustainable development, community safety, equal opportunities or human rights implications arising from this report.

## **ENVIRONMENT AND SUSTAINABILITY IMPLICATIONS (INCLUDING CLIMATE CHANGE)**

The Business Community Connector Scheme will be sustained and kept up to date by Community Together CIC who are the responsible organisation for this scheme.

There are no climate change/net zero Implications as a result of this report.



## BACKGROUND INFORMATION

Tamworth Borough Council has recognised for some time the role that Businesses can play in reaching some of our most vulnerable clients. The scheme can support businesses with the toolkit to signpost both their staff and/or residents of Tamworth to support services available within our community.

### REPORT AUTHOR

Karen Clancy Community Partnerships Manager  
[Karen-clancy@tamworth.gov.uk](mailto:Karen-clancy@tamworth.gov.uk)

Jo Sands, Assistant Director Partnerships  
[Joanne-sands@tamworth.gov.uk](mailto:Joanne-sands@tamworth.gov.uk)  
01827 709585

### APPENDICES

Copy of the Directory.



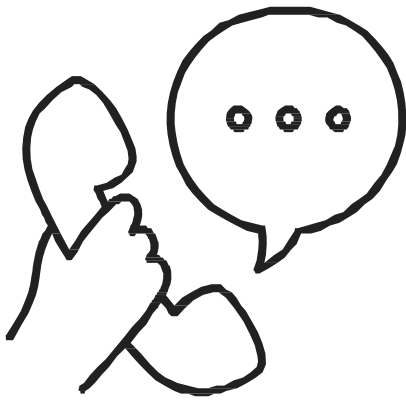
# Business Connector Directory V4 22nd N

List of Businesses signed up



# List of Businesses signed up for Business

This page is intentionally left blank



# CONNECTOR DIRECTORY



Version 4 – 22/11/2023



## Welcome to the Business Connector Directory

This Directory is an information tool for Businesses to use in two simple ways and in doing so helping your staff team and customers. This is another great way of meeting Corporate Social Responsibility.

You know your customers and staff team and will know when things don't seem right so you can use the directory to do simple signposting.

All services are in alphabetic order of the name of the issue at hand. Please see contents page for relevant page number of the service that maybe useful.

**EXAMPLE 1.** Where it will benefit is when a staff member picks up information from the staff room or notice board and gets help so that their private issue doesn't become a crisis leading to time off work.

**EXAMPLE 2.** Where a customer receives help or knows that through signing up to be a Business Community Connector it helps support your brand as a community conscious organisation when people make decisions about who to purchase from.

The Directory will be updated by Community Together CIC quarterly and emailed out to the lead contact for the scheme. We check all services in the directory are relevant, operating and make any changes where necessary so you have the most up to date information as possible.

Thank you for signing up as a Business Community Connector.

## CONTENTS

Page 1	Abuse Addiction ADHD
Page 2	Advice Advocacy Anti-Social Behaviour Autism Befriending
Page 3	Benefits and Rights Bereavement Blind (Partially Sighted)
Page 4	Cancer Support Care Homes Carers Counselling
Page 5	Crime Day Opportunities Days Out/Trips Debt/Financial Support
Page 6	Dementia
Page 7	Digital Skills Disability and Mobility Aids
Page 8	Domestic Violence/Abuse Education Elderly Support Family Support
Page 9	Food and Food Bank/Hygiene Bank Fuel and Bills and Poverty Furniture and White Goods Health and Wellbeing
Page 10	Homeless Housing
Page 11	Housing – Sheltered Schemes Libraries
Page 12	Long Term Medical Conditions
Page 13	Mental Health Support
Page 14	Places of Welcome
Page 15	Safeguarding Transport



## ABUSE

SARAC – Sexual Abuse and Rape Advice Centre	<a href="http://www.sarac.org.uk">www.sarac.org.uk</a>	01283 517 185
Staffordshire Women's Aid	<a href="http://www.staffordshirewomensaid.org">www.staffordshirewomensaid.org</a>	0300 330 5959
Victim Support	<a href="http://www.victimsupport.org.uk">www.victimsupport.org.uk</a>	08081 689 111

## ADDICTION

Gamblers Anonymous Tamworth	<a href="http://www.gamblersanonymous.org.uk">www.gamblersanonymous.org.uk</a>	tamworthga@hotmail.com 0330 094 0322
R-Solv – misuse of solvents, gases, and legal highs	<a href="http://www.re-solv.org">www.re-solv.org</a>	01785 817 885
Humankind	<a href="http://www.humankindcharity.org.uk">www.humankindcharity.org.uk</a>	01325 731 160
Al-Anon Family Groups	<a href="http://www.al-anonuk.org.uk">www.al-anonuk.org.uk</a>	0800 0086 811
BAC & O'Connor	<a href="http://www.bacandoconnor.co.uk">www.bacandoconnor.co.uk</a>	01283 537 280
Better Way Recovery	<a href="http://www.betterwayrecovery.org.uk">www.betterwayrecovery.org.uk</a>	0742 6351 853
NHS Gambling Information	<a href="http://w.nhs.uk/live-well/addiction-support/gambling-addiction/">w.nhs.uk/live-well/addiction-support/gambling-addiction/</a>	01785 221 662
Aquarius Gambling	<a href="https://aquarius.org.uk/our-services/adult-services/gambling/">https://aquarius.org.uk/our-services/adult-services/gambling/</a>	0121 622 8181
STARS Staffordshire Treatment And Recovery Service	<a href="http://www.stafftreatmentandrecovery.co.uk">www.stafftreatmentandrecovery.co.uk</a>	01827 50664
Talk to Frank	<a href="http://www.talktofrank.com">www.talktofrank.com</a>	0300 123 6600

## ADHD

In It Together	<a href="http://in-it-together.weebly.com">in-it-together.weebly.com</a>	initttogether.tamworth@gmail.com
Self Sufficient Children Tamworth	<a href="https://self-sufficient-children.ueniweb.com">https://self-sufficient-children.ueniweb.com</a>	07465 953 169
ADHD and You	<a href="http://www.adhdandyou.co.uk">www.adhdandyou.co.uk</a>	N/A

## ADVICE

Citizens Advice Bureau	<a href="http://www.citizensadvicemidmercia.org.uk">www.citizensadvicemidmercia.org.uk</a>	08082 787 972
Citizens Advice Bureau Debt Line	<a href="http://www.citizensadvicemidmercia.org.uk">www.citizensadvicemidmercia.org.uk</a>	01332 228 74
Beat the Cold	<a href="http://www.beatcold.org.uk">www.beatcold.org.uk</a>	0800 389 2258 or 01782 914 915
National Energy Action Action for Warm Homes	<a href="http://www.nea.org.uk/who-we-are/about-nea/">www.nea.org.uk/who-we-are/about-nea/</a>	Energy Advice 0800 304 7159  Benefit Advice 0800 138 8218
Tamworth CAN (Community Advice Network)	N/A	01827 768 809

## ADVOCACY

Total Voice Staffordshire		01785 336 3687
Voice Ability	<a href="http://www.voiceability.org.uk">www.voiceability.org.uk</a>	0300 303 1660
Asist	<a href="http://www.asist.co.uk">www.asist.co.uk</a>	01782 845 584
Health Watch	<a href="http://www.healthwatch.co.uk">www.healthwatch.co.uk</a>	0800 051 8371
PohWER	<a href="http://www.pohwer.net">www.pohwer.net</a>	0300 456 2370

## ANTI SOCIAL BEHAVIOUR

Victim Support	<a href="http://www.victimsupport.org.uk">www.victimsupport.org.uk</a>	0808 1689 111
Harmony ABS and Mediation Services	<a href="http://www.staffordshire-pfcc.gov.uk/supporting-victims/anti-social-behaviour/">www.staffordshire-pfcc.gov.uk/supporting-victims/anti-social-behaviour/</a>	0330 1757 258 Out of Hours 0808 16 89 111

## AUTISM

Staffordshire Adults Autistic Society	<a href="https://saascharity.org">https://saascharity.org</a>	01782 616 555
In It Together	<a href="http://in-it-together.weebly.com">in-it-together.weebly.com</a>	<a href="mailto:Inittogether.tamworth@gmail.com">Inittogether.tamworth@gmail.com</a>
Self Sufficient Children Tamworth	<a href="https://self-sufficient-children.ueniweb.com">https://self-sufficient-children.ueniweb.com</a>	07465 953 169

## BEFRIENDING

Community Together CIC	<a href="http://www.communitytogethercic.org.uk">www.communitytogethercic.org.uk</a>	01827 59646
Age UK	<a href="http://www.ageuk.org.uk/staffordshire/">www.ageuk.org.uk/staffordshire/</a>	01785 788477
Make New Friends	<a href="http://www.makenewfriends.org.uk">www.makenewfriends.org.uk</a>	07785 759 863



## BENEFITS AND RIGHTS

Staffordshire County Council	<a href="http://www.staffordshire.gov.uk">www.staffordshire.gov.uk</a>	0300 111 8050
Citizens Advice Bureau	<a href="http://www.citizensadvicemidmercia.org.uk">www.citizensadvicemidmercia.org.uk</a>	08082 787 972
The Money Advice Service	<a href="http://www.moneyadviceservice.org.uk">www.moneyadviceservice.org.uk</a>	0800 138 7777
Money Helper	<a href="http://www.moneyhelper.org.uk/en">www.moneyhelper.org.uk/en</a>	N/A
National Energy Action Action for Warm Homes	<a href="http://www.nea.org.uk/who-we-are/about-nea/">www.nea.org.uk/who-we-are/about-nea/</a>	Benefit Advice 0800 138 8218

## BEREAVEMENT

Help Point Sacred Heart Church	<a href="http://www.stgileshospice.com">www.stgileshospice.com</a>	01543 434 535
Cruse	<a href="http://www.cruse.org.uk">www.cruse.org.uk</a>	0808 808 1977
OASIS St Paul Fazeley	<a href="http://www.peelparishes.org/oasis">www.peelparishes.org/oasis</a>	01827 289 414
Sue Ryder	<a href="http://www.sueryder.org/how-we-can-help/bereavement-information">www.sueryder.org/how-we-can-help/bereavement-information</a>	0808 164 4572
A Child of Mine	<a href="http://www.achildofmine.org.uk">www.achildofmine.org.uk</a>	07803 751 229
Dads Support	<a href="http://www.thedadsnet.com/coping-with-loss-after-miscarriage/">www.thedadsnet.com/coping-with-loss-after-miscarriage/</a>	N/A
Sudden Death	<a href="http://www.sudden.org">www.sudden.org</a>	N/A
Strong Men Telephone based peer support	<a href="http://www.strongmen.org.uk/services/man2man/">www.strongmen.org.uk/services/man2man/</a>	0800 915 0400

## BLIND (PARTIALLY SIGHTED)

Macular Society	<a href="http://www.macularsociety.org">www.macularsociety.org</a>	0300 3030 111
Royal National Institute of Blind People	<a href="http://www.rnib.org.uk">www.rnib.org.uk</a>	0303 123 9999
Royal Society for Blind Children	<a href="http://www.rsbc.org.uk">www.rsbc.org.uk</a>	020 3198 0225
Tamworth Talking Newspaper	N/A	01827 287344
Monday Club, Masonic Rooms, Tamworth	N/A	01827 61773
Staffordshire County Council	<a href="http://www.staffordshire.gov.uk/Libraries/Library-services/Reading/Blind-and-partially-sighted-customers.aspx">www.staffordshire.gov.uk/Libraries/Library-services/Reading/Blind-and-partially-sighted-customers.aspx</a>	0300 111 8010
Blind Veterans UK	<a href="http://www.blindveterans.org.uk/">www.blindveterans.org.uk/</a>	0300 111 2233

## CANCER SUPPORT

Tamworth Wellbeing Cancer Support Centre	<a href="http://www.tamworth-wellbeing-cancer-support.com">www.tamworth-wellbeing-cancer-support.com</a>	01827 899 590 or 07368 265 984
Marie Curie	<a href="http://www.mariecurie.org.uk">www.mariecurie.org.uk</a>	0800 090 2309
Macmillan	<a href="http://www.macmillan.org.uk/cancer-information-and-support">www.macmillan.org.uk/cancer-information-and-support</a>	0808 808 00 00
St Giles Hospice Specialist Women's Cancer Support Service	<a href="http://www.stgileshospice.com/specialist-womens-cancer-support-service/">www.stgileshospice.com/specialist-womens-cancer-support-service/</a>	01543 432 031
Cancer Research	<a href="http://www.cancerresearchuk.org">www.cancerresearchuk.org</a>	0300 123 1022

## CARE HOMES

Care Home	<a href="http://www.carehome.co.uk/care_search_results.cfm/searchtown/Tamworth">www.carehome.co.uk/care_search_results.cfm/searchtown/Tamworth</a>	0800 808 5852
Care Home Selection	<a href="https://carehomeselection.co.uk">https://carehomeselection.co.uk</a>	0808 175 3609

## CARERS

Staffordshire Together for Carers	<a href="http://www.n-compass.org.uk/our-services/carers/staffordshire-together-for-carers-service">www.n-compass.org.uk/our-services/carers/staffordshire-together-for-carers-service</a>	0300 303 0621
Coffee and Chat, Sacred Heart Church, Glascoate, Staffordshire Together for Carers	N/A	0300 303 0621
Carers Trust	<a href="https://carers.org">https://carers.org</a>	0300 772 9600
Staffordshire County Council	<a href="http://www.staffordshire.gov.uk/Advice-support-and-care-for-adults/Carers/Carers-Overivew.aspx">www.staffordshire.gov.uk/Advice-support-and-care-for-adults/Carers/Carers-Overivew.aspx</a>	0300 111 8000

## COUNSELLING

YESS Your Emotional Support Service	<a href="https://yess.uk">https://yess.uk</a>	01889 567 756
Mind Burton and District	<a href="http://www.burtonmind.co.uk">www.burtonmind.co.uk</a>	01283 566696
Talking Therapies (Previously Wellbeing Matters)	<a href="https://staffsandstoketalkingtherapies.nhs.uk">https://staffsandstoketalkingtherapies.nhs.uk</a>	01827 263 838

## CRIME

Uniting Staffordshire Against Hate (Part of Victim Gateway Service)	<a href="http://www.staffsvictimsgateway.org.uk">www.staffsvictimsgateway.org.uk</a>	0330 0881 339
---	--	---------------

## DAY OPPORTUNITIES

Young at Heart Day Club, Comberford Lane, Wiggington	<a href="http://www.youngathearttamworth.com">www.youngathearttamworth.com</a>	01827 283 888
Age UK Day Centre, Cygnet Drive, Tamworth	<a href="http://www.ageuk.org.uk/staffordshire/our-services/day-opportunities/victoria-house/">www.ageuk.org.uk/staffordshire/our-services/day-opportunities/victoria-house/</a>	01827 60112
Manor House, Hockley Road, Wilnecote	<a href="http://www.themanorhousetamworth.org.uk">www.themanorhousetamworth.org.uk</a>	01827 254 544
Creative Choices CIC	<a href="http://www.creativechoicescic.co.uk">www.creativechoicescic.co.uk</a>	01827 68666
Care First Ltd	<a href="https://carefirstltd.co.uk">https://carefirstltd.co.uk</a>	0121 308 6555
Briars Barn	<a href="http://www.briarsbarn.co.uk">www.briarsbarn.co.uk</a>	01827 896 454

## DAYS OUT/TRIPS

Kendall and Wall Charitable Trust	<a href="http://www.kendallandwall.org">www.kendallandwall.org</a>	01543 897 131
Community Together CIC	<a href="http://www.communitytogethercic.org.uk">www.communitytogethercic.org.uk</a>	01827 59646
Sunset Travel Club	N/A	Harold 01827 703 669 07494 438 250

## DEBT/FINANCIAL SUPPORT

Severn Trent Trust Fund	<a href="http://www.sttf.org.uk">www.sttf.org.uk</a>	0121 355 7766
W E Dunn Trust	<a href="https://grants-search.turn2us.org.uk/grant/the-w-e-dunn-trust-15876">https://grants-search.turn2us.org.uk/grant/the-w-e-dunn-trust-15876</a>	01564 773 407
Advice Now	<a href="http://www.advicenow.org.uk">www.advicenow.org.uk</a>	N/A
The Community Foundation	<a href="https://staffordshire.foundation">https://staffordshire.foundation</a>	01785 339 540
Citizens Advice Bureau	<a href="http://www.citizensadvicemidmercia.org.uk">www.citizensadvicemidmercia.org.uk</a>	08082 787 972
Hope 4U	<a href="http://www.hope4u.co.uk">www.hope4u.co.uk</a>	0300 320 2140
National Energy Action Action for Warm Homes	<a href="http://www.nea.org.uk/who-we-are/about-nea/">www.nea.org.uk/who-we-are/about-nea/</a>	Energy Advice 0800 304 7159  Benefit Advice 0800 138 8218

## DEMENTIA

Alzheimer Society	<a href="http://www.alzheimers.org.uk">www.alzheimers.org.uk</a>	01543 573 936
Dementia UK	<a href="http://www.dementiauk.org">www.dementiauk.org</a>	0800 888 6678
Memory Café, Sacred Heart Church	<a href="http://www.heartoftamworth.org/memory-cafe/">www.heartoftamworth.org/memory-cafe/</a>	01827 431002 or 01543 625 002
Dementia Caring, Time Out Club, Elford Village Hall	<a href="https://dementiacaring.org.uk/home">https://dementiacaring.org.uk/home</a>	0776 969 0244
Young at Heart Day Club, Comberford Lane, Wiggington	<a href="http://www.youngathearttamworth.com">www.youngathearttamworth.com</a>	01827 283 888
Manor House Day Centre, Hockley Road, Wilnecote	<a href="http://www.themanorhousetamworth.org.uk">www.themanorhousetamworth.org.uk</a>	01827 254 544
Age UK Day Centre, Cygnet Drive, Tamworth	<a href="http://www.ageuk.org.uk/staffordshire/our-services/day-opportunities/victoria-house/">www.ageuk.org.uk/staffordshire/our-services/day-opportunities/victoria-house/</a>	01785 788 482
Zest for Life, High Rise Social Club, Balfour	N/A	07546 906 028
Minds Together, Cognitive Stimulation Therapy	N/A	01827 259 955
Dementia Choir, Elim Church, Bamford Street	<a href="http://www.tamworth-elim.org.uk/Groups/333817/Calendar.aspx">www.tamworth-elim.org.uk/Groups/333817/Calendar.aspx</a>	01827 302 430
Love to Move, Clifton Campville	<a href="http://www.britishgymnasticsfoundation.org/lovetomove/">www.britishgymnasticsfoundation.org/lovetomove/</a>	01827 431 002
Phoenix Club, Wood End Club, Atherstone	<a href="http://www.phoenixgroup-nwarks.org.uk">www.phoenixgroup-nwarks.org.uk</a>	01827 717135 or 0750 056 9690
Sing for Fun, Community Together CIC	<a href="http://www.communitytogethercic.org.uk">www.communitytogethercic.org.uk</a>	01827 59646
Singing for the Brain, Christchurch Lane, Lichfield	<a href="http://www.alzheimers.org.uk">www.alzheimers.org.uk</a>	01543 573 936
Staffordshire Police – Herbert Protocol	<a href="http://www.staffordshire.police.uk/advice/advice-and-information/missing-person/missing-persons/vulnerable-people-at-risk-of-going-missing/">www.staffordshire.police.uk/advice/advice-and-information/missing-person/missing-persons/vulnerable-people-at-risk-of-going-missing/</a>	<a href="http://www.staffordshire.police.uk/contact/af/contact-us-beta/contact-us/">www.staffordshire.police.uk/contact/af/contact-us-beta/contact-us/</a>

## DIGITAL SKILLS

South Staffordshire College	<a href="http://www.southstaffs.ac.uk/careers/adult-learners/digital-skills-centre/">www.southstaffs.ac.uk/careers/adult-learners/digital-skills-centre/</a>	0300 456 24 24
Community Learning Service Staffordshire County Council	<a href="https://staffordshirecommunitylearning.org.uk">https://staffordshirecommunitylearning.org.uk</a>	01785 278 770 or 01543 334 537
Tamworth Central Library	<a href="http://www.staffordshire.gov.uk/Libraries/branchlibraries/TamworthLibrary/TamworthLibrary.aspx">www.staffordshire.gov.uk/Libraries/branchlibraries/TamworthLibrary/TamworthLibrary.aspx</a>	01827 782 124
Steps to Work Skills for Life	<a href="http://www.stepstowork.co.uk/nifty-numbers/">www.stepstowork.co.uk/nifty-numbers/</a>	07935 711 422
Ability Net	<a href="https://abilitynet.org.uk">https://abilitynet.org.uk</a>	0800 048 7642
Learn My Way	<a href="http://www.learnmyway.com">www.learnmyway.com</a>	N/A

## DISABILITY AND MOBILITY AIDS

Grace Cares Pre-Loved Care Equipment	<a href="https://grace-cares.com">https://grace-cares.com</a>	01543 326819
Complete Care Shop	<a href="http://www.completecareshop.co.uk">www.completecareshop.co.uk</a>	0330 160 000
Midshires Mobility Group	<a href="http://www.midshiresgroup.co.uk">www.midshiresgroup.co.uk</a>	01889 582 332
Medequip Community Equipment Service	<a href="http://www.medequip-uk.com/contact/stafford">www.medequip-uk.com/contact/stafford</a>	01785 273950
Mobility & Lifestyle 5 Colehill, Tamworth	<a href="http://www.mobilityandlifestyle.co.uk">www.mobilityandlifestyle.co.uk</a>	01827 216 111
Proud Hands British Sign Language	<a href="http://www.proudhandsbsl.com">www.proudhandsbsl.com</a>	07920 433 638
My Home Helper	<a href="http://www.myhomehelper.co.uk/home/home.aspx">www.myhomehelper.co.uk/home/home.aspx</a>	info@myhomehelper.co.uk
Age UK	<a href="http://www.ageuk.org.uk/products/mobility-and-independence-at-home/">www.ageuk.org.uk/products/mobility-and-independence-at-home/</a>	
Happy at Home Staffordshire County Council	<a href="http://www.staffordshire.gov.uk/Advice-support-and-care-for-adults/Help-and-support-with-daily-living/Daily-living-equipment-and-technology/Support-at-home.aspx">www.staffordshire.gov.uk/Advice-support-and-care-for-adults/Help-and-support-with-daily-living/Daily-living-equipment-and-technology/Support-at-home.aspx</a>	
Careline365	<a href="http://www.careline.co.uk">www.careline.co.uk</a>	0800 101 3333
Living Made Easy	<a href="https://livingmadeeasy.org.uk">https://livingmadeeasy.org.uk</a>	info@dlf.org.uk

## DOMOESTIC VIOLENCE/ABUSE

TSB Emergency Flee Fund	<a href="http://www.tsb.co.uk/news-releases/tsb-launches-emergency-flee-fund-for-domestic-abuse-victims/">www.tsb.co.uk/news-releases/tsb-launches-emergency-flee-fund-for-domestic-abuse-victims/</a>	N/A
Pathway Project	<a href="http://www.pathway-project.co.uk">www.pathway-project.co.uk</a>	01543 676 800
New Era	<a href="http://www.new-era.uk">www.new-era.uk</a>	Victims 0300 303 3778 Perpetrators 0300 373 5772
Victim Support	<a href="http://www.victimsupport.org.uk">www.victimsupport.org.uk</a>	08081 689 111
SARAC – Sexual Abuse and Rape Advice Centre	<a href="http://www.sarac.org.uk">www.sarac.org.uk</a>	01283 517 185

## EDUCATION

South Staffordshire College	<a href="http://www.southstaffs.ac.uk">www.southstaffs.ac.uk</a>	0300 456 24 24
Burton and South Derbyshire College	<a href="http://www.bsdc.ac.uk">www.bsdc.ac.uk</a>	01283 494 400
Skills for Life	<a href="https://skillsforlife.campaign.gov.uk/">https://skillsforlife.campaign.gov.uk/</a>	N/A
National Carers Service	<a href="https://nationalcareers.service.gov.uk">https://nationalcareers.service.gov.uk</a>	0800 100 900
Community Learning Service Staffordshire County Council	<a href="https://staffordshirecommunitylearning.org.uk">https://staffordshirecommunitylearning.org.uk</a>	01785 278 770 Or 01543 334 537
Steps to Work	<a href="http://www.stepstowork.co.uk">www.stepstowork.co.uk</a>	01922 627 555

## ELDERLY SUPPORT

Friends of the Elderly (FOTE)	<a href="http://www.fote.org.uk">www.fote.org.uk</a>	020 7730 8263
Independent Age	<a href="http://www.independentage.org">www.independentage.org</a>	0800 319 6789
Age UK	<a href="http://www.ageuk.org.uk/staffordshire/">www.ageuk.org.uk/staffordshire/</a>	01785 788 494 or 01827 60112
Dementia UK	<a href="http://www.dementiauk.org">www.dementiauk.org</a>	0800 888 6678
Royal Voluntary Service	<a href="http://www.royalvoluntaryservice.org.uk">www.royalvoluntaryservice.org.uk</a>	0808 196 3382

## FAMILY SUPPORT

Malachi	<a href="http://www.malachi.org.uk">www.malachi.org.uk</a>	0121 441 4556
Love Inspire Foundation	<a href="http://www.loveinspirefoundation.co.uk">www.loveinspirefoundation.co.uk</a>	07838 516 607
Home Start	<a href="https://homestarttamworth.org.uk">https://homestarttamworth.org.uk</a>	01827 62400
Family Rights Group	<a href="http://www.frg.org.uk">www.frg.org.uk</a>	0808 801 0366
There For You Advisory Service	<a href="http://www.there-for-you-advisory-service.com">www.there-for-you-advisory-service.com</a>	0800 024 6284
Match Mother – Mothers apart from their children	<a href="http://www.matchmothers.org">www.matchmothers.org</a>	0800 689 4104

## FOOD AND FOOD BANK/HYGIENE BANK

Tamworth Food Bank	<a href="https://tamworth.foodbank.org.uk">https://tamworth.foodbank.org.uk</a>	01827 302431
Tamworth Hygiene Bank	<a href="https://www.facebook.com/thehygienebanktamworth/">https://www.facebook.com/thehygienebanktamworth/</a>	Tamworthhygienebank@gmail.com
Sacred Heart HOT Shop, Glascote, Tamworth	<a href="http://www.facebook.com/HeartofTamworthCommunityProject/">www.facebook.com/HeartofTamworthCommunityProject/</a>	01827 259955
I Care Cuisine	<a href="https://www.icarecuisine.co.uk">https://www.icarecuisine.co.uk</a>	01889 584 444
Wiltshire Farm Foods	<a href="http://www.wiltshirefarmfoods.com">www.wiltshirefarmfoods.com</a>	01384 262 555
Tamworth Pantry	<a href="http://www.facebook.com/p/Tamworth-Pantry-100068948163434/">www.facebook.com/p/Tamworth-Pantry-100068948163434/</a>	07434 676 615

## FUEL AND BILLS AND POVERTY

Beat the Cold	<a href="http://www.beatcold.org.uk">www.beatcold.org.uk</a>	0800 389 2258 or 01782 914 915
Citizens Advice Bureau	<a href="http://www.citizensadvicemidmercia.org.uk">www.citizensadvicemidmercia.org.uk</a>	08082 787 972
National Energy Action Action for Warm Homes	<a href="http://www.nea.org.uk/who-we-are/about-nea/">www.nea.org.uk/who-we-are/about-nea/</a>	Energy Advice 0800 304 7159  Benefit Advice 0800 138 8218

## FURNITURE AND WHITE GOODS

Number Eight Charity	<a href="https://numbereighttamworth.org.uk/shop-with-number-eight/">https://numbereighttamworth.org.uk/shop-with-number-eight/</a>	01827 429 038
Bargain Hunts	<a href="http://www.facebook.com/Bargainhuntstamworth/?locale=en_GB">ww.facebook.com/Bargainhuntstamworth/?locale=en_GB</a>	07790 746 748
YMCA	<a href="http://www.ymca.org.uk/shops">www.ymca.org.uk/shops</a>	01827 67759

## HEALTH AND WELLBEING

Everyone Health Weight Management	<a href="https://staffordshire.everyonehealth.co.uk">https://staffordshire.everyonehealth.co.uk</a>	0333 005 0095
Menopause Support Group Lichfield	<a href="http://www.thebestof.co.uk/local/lichfield/community-hub/local-guides/view/positive-menopause/">www.thebestof.co.uk/local/lichfield/community-hub/local-guides/view/positive-menopause/</a>	Julie@eatwelltobewell.co.uk

## HOMELESS

CRISIS	<a href="http://www.crisis.org.uk/get-help/birmingham/">www.crisis.org.uk/get-help/birmingham/</a>	0121 348 7950
Tamworth Borough Council	<a href="http://www.tamworth.gov.uk/help-if-you-are-homeless">www.tamworth.gov.uk/help-if-you-are-homeless</a>	01827 709 709 Option 1
Street Link	<a href="https://thestreetlink.org.uk">https://thestreetlink.org.uk</a>	enquiries@thestreetlink.org.uk
Pathway Project	<a href="http://www.pathway-project.co.uk/services/refuge/">www.pathway-project.co.uk/services/refuge/</a>	01543 676 800
YMCA	<a href="https://burtonymca.org">https://burtonymca.org</a>	01283 538 802

## HOUSING

Tamworth Borough Council	<a href="http://www.tamworth.gov.uk/finding-home">www.tamworth.gov.uk/finding-home</a>	01827 709 709
Bromford Housing Group	<a href="http://www.bromford.co.uk/find-a-home/">www.bromford.co.uk/find-a-home/</a>	0330 1234 034
Clarion Housing	<a href="http://www.myclarionhousing.com/find-a-home">www.myclarionhousing.com/find-a-home</a>	0300 500 8000
Derwent Living	<a href="http://www.placesforpeople.co.uk/find-a-home/homes-to-rent">www.placesforpeople.co.uk/find-a-home/homes-to-rent</a>	020 7843 3820
Elim Housing Association	<a href="http://www.elimhousing.co.uk/finding-a-home/">www.elimhousing.co.uk/finding-a-home/</a>	01454 411172
Anchor Specialist Housing for Later Life	<a href="http://www.anchor.org.uk">www.anchor.org.uk</a>	0800 731 2020
Midland Heart Housing Association	<a href="http://www.midlandheart.org.uk/find-a-home/">www.midlandheart.org.uk/find-a-home/</a>	0345 60 20 540
Tamworth Cornerstone For single people 16-25	<a href="http://www.tcha.org.uk">www.tcha.org.uk</a>	01827 319918
Mutual House Exchange	<a href="http://www.houseexchange.org.uk">www.houseexchange.org.uk</a>	01827 709 709



## HOUSING – SHELTERED SCHEMES

Tamworth Borough Council Sheltered Housing Schemes	<a href="http://www.tamworth.gov.uk/sheltered-housing-schemes">www.tamworth.gov.uk/sheltered-housing-schemes</a>	Ankermoor Court, Rene Road, Bolehall 01827 65886
Tamworth Borough Council Sheltered Housing Schemes	<a href="http://www.tamworth.gov.uk/sheltered-housing-schemes">www.tamworth.gov.uk/sheltered-housing-schemes</a>	Annandale, Ellerbeck, 01827 896264
Tamworth Borough Council Sheltered Housing Schemes	<a href="http://www.tamworth.gov.uk/sheltered-housing-schemes">www.tamworth.gov.uk/sheltered-housing-schemes</a>	Bright Crescent, Kettlebrook 01827 288367
Tamworth Borough Council Sheltered Housing Schemes	<a href="http://www.tamworth.gov.uk/sheltered-housing-schemes">www.tamworth.gov.uk/sheltered-housing-schemes</a>	Burns Road, Leyfields and Magnolia, Amington 0752 863 0051
Tamworth Borough Council Sheltered Housing Schemes	<a href="http://www.tamworth.gov.uk/sheltered-housing-schemes">www.tamworth.gov.uk/sheltered-housing-schemes</a>	Cheatle Court, Hedging Lane 01827 280380
Tamworth Borough Council Sheltered Housing Schemes	<a href="http://www.tamworth.gov.uk/sheltered-housing-schemes">www.tamworth.gov.uk/sheltered-housing-schemes</a>	Edward Court, St George's Way 01827 53160
Tamworth Borough Council Sheltered Housing Schemes	<a href="http://www.tamworth.gov.uk/sheltered-housing-schemes">www.tamworth.gov.uk/sheltered-housing-schemes</a>	Glenfield, Lower Park 01827 286347
Tamworth Borough Council Sheltered Housing Schemes	<a href="http://www.tamworth.gov.uk/sheltered-housing-schemes">www.tamworth.gov.uk/sheltered-housing-schemes</a>	Oakendale, Pennymoor Road 01827 896770
Tamworth Borough Council Sheltered Housing Schemes	<a href="http://www.tamworth.gov.uk/sheltered-housing-schemes">www.tamworth.gov.uk/sheltered-housing-schemes</a>	Sunset Close, Town Centre 07891 052192
Tamworth Borough Council Sheltered Housing Schemes	<a href="http://www.tamworth.gov.uk/sheltered-housing-schemes">www.tamworth.gov.uk/sheltered-housing-schemes</a>	Thomas Hardy Court, Goldsmith Place, Leyfields 01827 305424

## LIBRARIES

Tamworth Library	<a href="http://ww.staffordshire.gov.uk/Libraries/branchlibraries/TamworthLibrary/TamworthLibrary.aspx">ww.staffordshire.gov.uk/Libraries/branchlibraries/TamworthLibrary/TamworthLibrary.aspx</a>	01827 782124
Glascote Community Library	<a href="http://www.staffordshire.gov.uk/Libraries/branchlibraries/GlascoteLibrary/GlascoteLibrary.aspx">www.staffordshire.gov.uk/Libraries/branchlibraries/GlascoteLibrary/GlascoteLibrary.aspx</a>	01827 782 122
Wilnecote Library	N/A	01827 475147

## LONG TERM MEDICAL CONDITIONS

Sensory Support Staffordshire County Council	<a href="http://www.staffordshire.gov.uk/Advice-support-and-care-for-adults/Help-and-support-with-daily-living/Sensory/Sensory-support.aspx">www.staffordshire.gov.uk/Advice-support-and-care-for-adults/Help-and-support-with-daily-living/Sensory/Sensory-support.aspx</a>	0300 111 8010
Parkinson's	<a href="http://www.parkinsons.org.uk">www.parkinsons.org.uk</a>	0808 800 0303
Parkinson's Tamworth Support Group	<a href="https://localsupport.parkinsons.org.uk/provider/tamworth-support-group">https://localsupport.parkinsons.org.uk/provider/tamworth-support-group</a>	0300 123 3673
East Staffordshire and Surrounds Diabetes UK Patient Network	Meet at Sacred Heart Church, Silver Link Road, Tamworth	0759 037 9892
Diabetes UK	<a href="http://www.diabetes.org.uk">www.diabetes.org.uk</a>	0345 123 2399
Alzheimer's Society	<a href="http://www.alzheimers.org.uk">www.alzheimers.org.uk</a>	0333 150 3456
Multiple Sclerosis Trust	<a href="https://mstrust.org.uk">https://mstrust.org.uk</a>	0800 2032 38 39
MS Society	<a href="http://www.mssociety.org.uk">www.mssociety.org.uk</a>	0808 800 8000
Memory Café, Sacred Heart Church, Tamworth	<a href="http://www.homeinstead.co.uk/tamworth-lichfield/blog/tamworth-memory-cafe/">www.homeinstead.co.uk/tamworth-lichfield/blog/tamworth-memory-cafe/</a>	01827 431 002
Tamworth Wellbeing Cancer Support Centre	<a href="http://www.tamworth-wellbeing-cancer-support.com">www.tamworth-wellbeing-cancer-support.com</a>	01827 899 590 or 07368 265 984
Stroke Group Tamworth Speakability Group	<a href="http://www.stroke.org.uk/finding-support/clubs-and-groups/tamworth-speakability-group">www.stroke.org.uk/finding-support/clubs-and-groups/tamworth-speakability-group</a>	07485 084 747
Headway The Brain Injury Association -Tamworth Support Group	<a href="http://www.headway.org.uk/supporting-you/in-your-area/groups-and-branches/west-midlands/headway-tamworth-and-lichfield/">www.headway.org.uk/supporting-you/in-your-area/groups-and-branches/west-midlands/headway-tamworth-and-lichfield/</a>	07974 945028
Headway The Brain Injury Association	<a href="http://www.headway.org.uk">www.headway.org.uk</a>	0808 800 22 44
Tamworth Stroke Patients and their Carers Group	N/A	01827 285791

## MENTAL HEALTH SUPPORT

Mental Health and Social Inclusion Hub	<a href="http://www.mpft.nhs.uk/services/mental-health-community-services">www.mpft.nhs.uk/services/mental-health-community-services</a>	0808 196 3002
Talking Therapies (Previously Wellbeing Matters)	<a href="https://staffsandstoketalkingtherapies.nhs.uk">https://staffsandstoketalkingtherapies.nhs.uk</a>	01827 263 838
Crisis Text Line Shout	<a href="http://www.crisistextline.uk">www.crisistextline.uk</a>	Text SHOUT to 85258
Changes Tamworth CHOICES	<a href="http://www.changestamworth.com/about-us">www.changestamworth.com/about-us</a> <a href="https://sites.google.com/view/choices-cic/">https://sites.google.com/view/choices-cic/</a>	01827 311 006 01827 59376
Mind Burton and District	<a href="http://www.burtonmind.co.uk">www.burtonmind.co.uk</a>	01283 566696
Young Minds	<a href="http://www.youngminds.org.uk/young-person/your-guide-to-support/reaching-out-for-help/#Wheretofindsupport">www.youngminds.org.uk/young-person/your-guide-to-support/reaching-out-for-help/#Wheretofindsupport</a>	Parents Helpline 0808 802 5544
Samaritans	<a href="http://www.samaritans.org">www.samaritans.org</a>	116 123
Youth Access Aged 11 - 25	<a href="http://www.youthaccess.org.uk">www.youthaccess.org.uk</a>	020 8772 9900
Childline Under 19	<a href="http://www.childline.org.uk">www.childline.org.uk</a>	0800 11 11
Safe Haven Crisis Café Sacred Heart Church Glascote, Tamworth	<a href="http://www.burtonmind.co.uk/safehaven">www.burtonmind.co.uk/safehaven</a>	07380 460 551
Every Mind Matters	<a href="http://www.nhs.uk/every-mind-matters/">www.nhs.uk/every-mind-matters/</a>	N/A
Staffordshire Network For Mental Health	<a href="http://www.snmfh.org">www.snmfh.org</a>	07591 924 728
Brighter Futures	<a href="http://www.brighter-futures.org.uk/staffordshire-mental-health-helpline/">www.brighter-futures.org.uk/staffordshire-mental-health-helpline/</a>	Call 0808 800 2234 Text 07860 022821
Bipolar UK	<a href="http://ww.bipolaruk.org">ww.bipolaruk.org</a>	N/A
NHS Self Help Guides	<a href="https://web.nrw.nhs.uk/selfhelp/">https://web.nrw.nhs.uk/selfhelp/</a>	N/A
WELLIES Project	<a href="https://welliesproject.org.uk">https://welliesproject.org.uk</a>	07971 666 474 or 07767 844 921
The Wellbeing and Recovery College	<a href="https://recovery.mpft.nhs.uk">https://recovery.mpft.nhs.uk</a>	01785 221257 or 07891 099460
Mentell Men, is it time to talk?	<a href="http://www.mentell.org.uk">www.mentell.org.uk</a>	<a href="http://www.facebook.com/mentellcharity">www.facebook.com/mentellcharity</a>
No Panic	<a href="https://nopanics.org.uk">https://nopanics.org.uk</a>	0300 772 9844
Wellbeing for Disabled People and Families	<a href="https://spokzpeople.org.uk">https://spokzpeople.org.uk</a>	01543 399 760

## PLACES OF WELCOME

Places of Welcome are open to everyone regardless of their circumstances or situation and are staffed by volunteers. A place where people actively listen to one another. Offering free refreshments (at least a cup of tea and a biscuit) and basic local information. An accessible and hospitable building, open at the same time every week.

Tamworth Library Corporation Street B79 7DN	<a href="https://www.placesofwelcome.org.uk/">https://www.placesofwelcome.org.uk/</a>	Thursday 2pm – 4pm
Tamworth Castle Bowls Club Ladybank. B79 7NB	<a href="https://www.placesofwelcome.org.uk/">https://www.placesofwelcome.org.uk/</a>	Wednesday 1.30pm – 3.30pm
St Andrews Methodist Church Thackeray Drive. B79 8HY	<a href="https://www.placesofwelcome.org.uk/">https://www.placesofwelcome.org.uk/</a>	Thursday 11am – 1pm
Tamworth Baptist Church Derwent, Belgrave. B77 2LD	<a href="https://www.placesofwelcome.org.uk/">https://www.placesofwelcome.org.uk/</a>	Monday 9am – 12noon
Self Sufficient Children Opposite 209 Lichfield Street, Fazeley. B78 3QF	<a href="https://www.placesofwelcome.org.uk/">https://www.placesofwelcome.org.uk/</a>	Tuesday 3pm – 5pm
Bancroft Community Centre 207a Bancroft, Glascote B77 2EX	<a href="https://www.placesofwelcome.org.uk/">https://www.placesofwelcome.org.uk/</a>	Tuesday and Thursday 10am – 2pm
St Peter's Church Hawksworth, Glascote. B77 2HH	<a href="https://www.placesofwelcome.org.uk/">https://www.placesofwelcome.org.uk/</a>	Friday 9am – 11am
Amington Church The Green. B77 4AD	<a href="https://www.placesofwelcome.org.uk/">https://www.placesofwelcome.org.uk/</a>	Thursday 2pm – 4pm
Manna House Coffee Shop Tamworth Elim Church 258-264 Glascote Road B77 2AT	<a href="https://www.placesofwelcome.org.uk/">https://www.placesofwelcome.org.uk/</a>	Tuesday and Thursday 11am – 1pm
Wilnecote Congregational Church Glascote Lane, Wilnecote. B77 2PH	<a href="https://www.placesofwelcome.org.uk/">https://www.placesofwelcome.org.uk/</a>	Wednesday 2pm – 4pm
St Martin in the Delph Community Coffee Shop Ellerbeck, Stonydelph B77 4JA	<a href="https://www.placesofwelcome.org.uk/">https://www.placesofwelcome.org.uk/</a>	Tuesday 10am – 1pm
Community Together CIC Offa House, Orchard Street. B79 7RE	<a href="https://www.placesofwelcome.org.uk/">https://www.placesofwelcome.org.uk/</a>	Monday 10am – 2pm

## SAFEGUARDING

Staffordshire County Council	<a href="http://www.staffordshire.gov.uk/Contact/Advice-support-and-care-for-adults/Report-abuse-of-an-adult.aspx">www.staffordshire.gov.uk/Contact/Advice-support-and-care-for-adults/Report-abuse-of-an-adult.aspx</a>	Adult Safeguarding 0345 604 2719
Staffordshire County Council	<a href="http://ww.staffordshire.gov.uk/Education/Education-welfare/Child-protection.aspx">ww.staffordshire.gov.uk/Education/Education-welfare/Child-protection.aspx</a>	Child Safeguarding 0800 131 3126
Crime Stoppers	<a href="https://crimestoppers-uk.org/news-campaigns/community/Staffordshire">https://crimestoppers-uk.org/news-campaigns/community/Staffordshire</a>	0800 555 111

## TRANSPORT

Tamworth Community Transport Services	N/A	01827 66632
Arriva	<a href="http://www.arrivabus.co.uk/find-a-service">www.arrivabus.co.uk/find-a-service</a>	0344 800 44 11
Bus Passes	<a href="http://www.staffordshire.gov.uk/Transport/buses/buspass/Nationalbuspass.aspx">www.staffordshire.gov.uk/Transport/buses/buspass/Nationalbuspass.aspx</a>	0300 111 8000
Medical Transport	<a href="http://www.ersmedical.co.uk">www.ersmedical.co.uk</a>	0800 035 6511
Healthwatch Information of NHS Transport	<a href="http://www.healthwatch.co.uk/advice-and-information/2023-09-26/do-you-need-help-travelling-nhs-services">www.healthwatch.co.uk/advice-and-information/2023-09-26/do-you-need-help-travelling-nhs-services</a>	0800 051 8371

This page is intentionally left blank

Company Name		
1st Glascote Scout Group		
ASDA		
Axel Drainage Ltd		
Bag Magic		
Balloons and Tunes		
Bargain Hunts		
Bevan Events - Magic Mirror & Photobooth Hire		
Bolehall Swifts (2010) Ltd		
Bolehall Swifts (2010) Ltd		
Boots		
Brannyroadshow		
Card Direct		
Central Hub Logistics Ltd		
Cex		
Chameleon Safety Services Ltd		
Claire's		
Clintons		
Co-op Travel		
Costa		
Cuppa & Craft Tamworth		
Drayton Manor Cricket & Social Club		
Dyno Rod (C.E. Walton & Co Ltd)		
EE Ltd		
Fallen from Grace Tattoo and Piercing		
Farplace Tamworth		
Flamingo Events		
Foodie Fanny Ltd		
Fun Club Hub CIO		
Fun Club Hub CIO		
Gloria Jeans Coffee		
Greggs		
H.Samuel		
H.Samuel		
Holland and Barrett		
HomeInstead		
Iceland		
Jiffy Bites Ltd		
Lichfield and Tamworth Chamber of Commerce		
LongTails Rat Rescue		
Melanie Makes Crafts		
Ministry		
Next Place Property Agents		
Number Eight Tamworth		
O2		
Omega Outdoor Adventure		
Oscar Pet Food Lichfield and Tamworth		

Panden Homes		
Pandora		
Peacocks		
Poundland		
Retro Graphix		
Right 2 Speak CIC		
Select		
St Gabriel's Catholic Primary School		
St George's Preschool		
T H Baker		
Tamworth Brewing Co Ltd		
Tamworth Computer Centre		
Tamworth Phone		
The Fragrance Shop		
The Gingertree		
The Iron Lady		
The Manor House Tamworth		
The Tamworth and District Civic Society		
The Works		
Three		
TopLine Plumbing & Heating Ltd		
Tots Play Tamworth		
TUI		
Vision Express		
Vodafone		
Young at Heart Day Club		
Zem Coffees Ltd		






Thursday 1<sup>st</sup> February 2024

**Report of the Portfolio Holder Environmental Health and Community Partnerships**

**Councillor and Community Grant Funding Proposals**

**Exempt Information**

None

**Purpose**

1. To outline proposals for a revised Councillor grant scheme
2. To outline proposals to contract with The Community Foundation of Staffordshire to manage the council's Community Grants and Councillor Grants schemes from April 2024 to 31 March 2025 whilst the current Grants and Funding Officer is on secondment.

**Recommendations**

It is recommended that Cabinet:

1. Approve an increase to the Councillor Grant fund budget (GS1002 34537) from £9000 to £30,000 from 1 April 2024 by:
  - Retaining the current £9000 Councillor Grant GS1002 34537
  - Permanent virement of £15,000 Environmental Grant GX180134537 to GS1002 34537 Councillor grants from 1 April 2024
  - Permanent virement of £3000 Festive grant fund GY1603 34537 to GS1002 34537 Councillor Grants from 1 April 2024
  - Permanent virement of £3000 from the Community Grants budget GS1002 31551 which will reduce this budget to £15,590 to GS1002 34537 Councillor Grants, recognising that retained funding will be available as per recommendation 2
2. Approve the retention of any underspend of Councillor environmental grant, Councillor Grant, Community Grant funding and Councillor Special Project Fund 2023/24 (where total in each budget line is above £5000) to be ringfenced in a retained budget for additional community grant/match funding for any emerging theme projects, e.g., Cost-of living crisis. This fund to be retained for up to 5 years (April 2029).
3. Approve the retention of any underspend on the Councillor and Community grant funds from 2024/25 (where it exceeds £5000) be retained for up to 5 years as per recommendation 2
4. Decommission the Councillor Special Project Grant Scheme with effect from 31 March 2024, but retain the budget (PM1685 - £5,318) as detailed in recommendation 2. This budget code will be retained and any future underspend as per recommendation 2 and 3 will be vired to this retained budget for up to 5 years.

5. Approve delegation to the Portfolio Holder Environmental Health and Community Partnerships/AD Partnerships/AD Environment, Culture and Wellbeing to manage the retained funds
6. Approve the updated criteria for Councillor grant funding attached as Appendix 1.
7. Consider and approve management of Councillor grants and Community grants through Staffordshire Foundation with continued reporting to the Grants and Nominations Committee from 1st April 2024 to 31 March 2025 whilst the current Grants and Funding Officer is on secondment ,enabling further review of Tamworth Borough Council grant funding and support for the voluntary sector
8. Delegate approval to the Portfolio Holder for Environmental Health and Community Partnerships and AD Partnerships to consider options for community grant funding going forward for future Cabinet consideration.

## Executive Summary

The council recognise and value the work of voluntary, charitable and community groups in Tamworth and have various grants which community groups can apply for to support their ongoing work, or specific projects in the town to support the most vulnerable in our communities.

The community grants are well supported by community groups and processed through the Nominations and Grants committee.

The three separate Councillor ward grant schemes and a special project fund do not have a cohesive approach to supporting our communities and are difficult to administer. These have been reviewed with the intention to combine into one meaningful and clear grant pot.

The voluntary and community grant schemes currently administered and monitored by the Partnerships team are as follows:

1. **The Community Grant Scheme** (£18,590 per annum) is delivered in conjunction with the Portfolio Holder and Partnership Grants and Funding officer with consideration and approval of applications through the Nominations and Grants Committee. This scheme runs very successfully with a good number of applications to each funding round.
2. **Festive Grant Scheme** (£3000 per annum) This scheme has been running since November 2017. Ward Councillors are allocated £100 each to award to a project that assists community and voluntary sector organisations to support the community at Christmas. Councillors are encouraged to link in with community groups in their Wards and request that they make an application for a grant. Councillors are able to pool their £100 grant to make a larger award to eligible groups. This grant scheme has been more difficult to manage as sometimes it is a struggle to get groups to apply for this smaller amount of funding.
3. **Councillor Community Grants** (£9000 per annum) this scheme was approved by Cabinet in November 2021 for £300 per councillor to fund Ward specific projects. Councillors can combine their fund to award a larger amount to eligible organisations. Like the Festive Grant Scheme Councillors are encouraged to link with community groups in their ward and nominate a group to receive the funding. The group complete the application and the councillor supports the application. Applications to this scheme can be slow to come in even though the grant is widely promoted to voluntary sector organisations.

4. **Environmental grants** were established in April 2022 to provide each member with £500 per annum (budget £15,000) to use to improve the environment in their wards for the benefit of their constituents. This grant was approved to enable small works on public space (excluding Housing Revenue Account land) to be undertaken that will enhance the environment in the area most relevant to them, allowing pooling with other ward members as necessary or to enhance proposals under existing planned revenue spend in conjunction with the AD Environment, Culture and Wellbeing

The grant was approved to be pooled with other ward Councillors and can be rolled over for up to four financial years to enable larger improvements with applications assessed through Streetscene to ensure any relevant short- or long-term maintenance or service can complement the proposal and by met by existing resources within the Streetscene services and further that it meets the Councils aims.

Take-up of this grant has been poor with only one application to date being submitted.

5. **Councillor Special Project Grant** was introduced in November 2021, established through an underspend of the Community grants during Covid when lockdowns prevented community groups from delivering community projects. The grant was designed to allow Councillors to bid for larger community projects over £5,000. Councillors can only apply for this grant annually, currently there is only enough funding in this scheme to award 1 special project of £5000.

At this point in time we have received no applications to the fund.

## **Grant Proposals**

It is proposed that the Councillor Community Grant, Festive Grant and Environmental Grant is combined into one Councillor Grant Fund to include all relevant criteria covering all grants.

Councillor grants will be for a minimum of £250 and grants which are promoted for environmental improvements will require a robust and informed future maintenance plan.

In addition, the Community Grant Scheme will be reduced by £3,000 per year to £15,590.

Each Ward Councillor will, therefore, be granted **£1000** per annum effective 1<sup>st</sup> April 2024 (which can be combined with other Ward Councillors) to distribute grants for the benefit of their constituents.

Grant criteria is attached as Appendix 1 and Application form is attached as Appendix 2. The grants will allow for Councillors to work with community groups year-round to address community challenges, environmental issues, or festive assistance.

It is further proposed that the Councillor Special Project fund be de-commissioned from 31 March 2024 with the underspend retained and that any underspend on the Environmental Grant budget in 2023/24 also be retained if it is in excess of £5000 for up to 5 years.

This retained fund will allow for Councillor consideration for larger grants or projects determined in conjunction with the Portfolio Holder Environment and Community Partnerships/AD Partnerships/ AD Environment, Culture and Wellbeing pending review of wider options for community grant funding. All retained funds will be reported to Nominations and Grants Committee on an annual basis.

## **Staffordshire Foundation**

Management of all the grant scheme is currently undertaken by the Partnership Grants and Funding Officer. The current officer has taken up a secondment for 2 days per week as the

Community Partnership Manager until March 2025 to ensure the Council meets its commitments under the UK Shared Prosperity Fund, Contain Outbreak Management Fund (COMF) and wider health inequalities/wellbeing work.

It is proposed that some of the vacant staffing hours budget will be used to commission Staffordshire Community Foundation to deliver the Council’s grant schemes to achieve wider promotion of grants available and also to further support opportunities for the voluntary sector in conjunction with the wider range of grants administered by the Foundation. This proposal is a pilot until March 2025.

The [Staffordshire Community Foundation](https://staffordshire.foundation/)<sup>1</sup> have an excellent track record of delivering grant schemes across Staffordshire and have been established since 2001. They currently manage Lichfield District Council and Stafford Borough Council grant schemes.

They will have a dedicated Tamworth grant page on their website that will link to Tamworth Council website. They will actively promote the grant scheme through social media, community forums and other promotional avenues. The Foundation will actively promote our grant schemes to voluntary organisations who are currently registered on their database.

Where groups are not on social media or digitally disadvantaged, the Foundation are able to use existing networks to promote face to face and forward paper application forms and information. Grants will also be promoted through our key anchor organisations including Support Staffordshire and Staffordshire Council for Voluntary Youth Services (SCVYS) and the Voluntary Sector Forum/community events.

The Staffordshire Foundation have recently updated their current grants system, which will enable them to run real time grant reports, which will provide the Council with evidence of grant impact. Community groups will also benefit from the support of Staffordshire Community Foundation and access additional funding opportunities that they currently manage and promote. This includes an independent [We Love Tamworth](#) community scheme which will be re-launched and provide wider opportunity for local groups to apply for funding.

It is proposed that the Partnership Officer Grants and Funding will contract manage the work of Staffordshire Community Foundation, and also support the AD Partnerships and Partnership Manager to review the Council’s future approach to grants and funding.

The Partnership Grants and Funding Officer will continue to deliver support to community and voluntary sector organisations, alongside the other roles and responsibilities outlined in the Partnership Officer Grants and Funding job role description.

It is proposed that the Councillor Grants are approved by the Portfolio Holder and Assistant Director Partnerships in consultation with the AD Environment, Culture and Wellbeing and an update on Councillor Grants awarded is provided to the Nominations and Grants committee on a quarterly basis. The table below provides proposed quarterly committee dates for 2024-25

**Table 1 Provisional Nominations and Grants Committee Dates 2024-25**

	Quarter 1	Quarter 2	Quarter 3	Quarter 4
Grants Committee Date	19 <sup>th</sup> June 2024	18 <sup>th</sup> September 2024	20 <sup>th</sup> November 2024	12 <sup>th</sup> March 2025

The updated grant criteria for Councillor Grants is attached at Appendix 1 and a draft application is attached at Appendix 2 .

**Options Considered**

<sup>1</sup> <https://staffordshire.foundation/>

No changes	The range of grants currently in operation provides some confusion for Councillors and is very resource intensive to manage. This option is not proposed
Create a single Councillor grant pot and trial administration of grant funding by Staffordshire Foundation	Preferred option during secondment of Grants and Funding Officer
Continue to manage by the Council	This option would require the temporary employment of a part time officer and would not provide some identified savings or allow a pilot with Staffordshire Foundation to assist the voluntary sector identify and apply for a wider pool of grant funding
Explore options for wider funding initiatives	This is recommended for consideration during 2024/25 to explore options for community grant funding. This may include social crowd funding, but will form part of budget review

### Resource Implications

There will be a cost saving to Tamworth Borough Council through commissioning the Staffordshire Community Foundation to deliver the Council's Community Grant Scheme and Councillor Grant Scheme for the period of officer secondment.

The savings at this current time are detailed below:

**Table 2 Financial Costings**

Current Staffing Budget Available	£
Staffordshire Community Foundation Costs to deliver TBC Grants Schemes 2024/25	£3,374.16
Available staffing budget available 2024/25	£23,715.60
Savings	£20,341.44

Management of the grants will enable the Partnerships team to resource monitoring of the grant administration, assist in further grant reviews, produce reports and manage other pressures through the management of the UK SPF and health inequalities funding.

### Legal/Risk Implications

There are no legal implications as result of this report.

RISK	MITIGATION
Staffordshire Foundation unable to support administration of the grants	The commission will have a robust MOU and agreement which will be monitored monthly. Reports will be forwarded for scrutiny by the Nominations and Grants Committee
Lack of engagement from Councillors/Community	Working with the Staffordshire Foundation and Council teams there will be a communications plan, monitoring and guidance
Failure of process	No grants will be accepted without appropriate paperwork and applications completed and approved

Lack of engagement due to lack of digital presence/social media	A range of leaflets/posters and application forms will be made available and promoted by Staffordshire Community Foundation for Councillors and Community Groups
Failure to understand group status/criteria	All grants will be awarded on the basis that groups will have a constitution and against criteria

### **Equalities Implications**

The approach has been considered in line with the Tamworth Borough Council Making Equality Real in Tamworth (MERIT) and supports the work of groups working with the most vulnerable in our communities.

### **Environment and Sustainability Implications (including climate change)**

Grants awarded will have measurable deliverables linked clearly to the contribution to the Corporate priorities :

- engage with our residents to promote community involvement and civic pride
- help develop and safeguard our environment and open spaces
- help build resilient communities
- utilise Council resources effectively

The further review of grant schemes will give options for ongoing sustainability.

### **Report Author**

Jo Sands Assistant Director Partnerships  
 Karen Clancy/Steph Ivey – Community Partnerships Manager

### **List of Background Papers**

### **Appendices**

Appendix 1 – Councillor grant criteria  
 Appendix 2 – Councillor grant application



## Councillor Community Grant Scheme Criteria

The Councillor Community Grants scheme enables councillors to provide grants to a wide variety of community and voluntary, not-for-profit organisations, for projects that further the Council's aims and actively support the Tamworth community to enjoy a better quality of life.

The total amount of funding is £30,000 per year. Each ward Councillor is allocated a budget of £1000 which can be used to support projects that bring benefits to their ward, therefore a maximum of £3000 will be available to spend in each of the ten wards in the borough, i.e., Amington, Belgrave, Bolehall, Castle, Glascote, Mercian, Spital, Stonydelph, Trinity and Wilnecote

**All Councillor Community Grant applications must be approved by the relevant ward councillor(s) prior to submitting the application for consideration. Organisations can only apply for a maximum of £3000 per project.**

Grant allocations will be decided by the Portfolio Holder for Environmental Health and Community Partnerships and the Assistant Director Partnerships in consultation with Assistant Director Environment, Culture and Wellbeing, and their decision is final.

**Applications for the Councillor Community Grants Scheme will close once all funding has been allocated on a first come basis.**

Grants will be awarded for projects/activities that can meet at least one of the following criteria:

- Assists with Cost-of-Living challenges
- Helps tackle the causes of inequality in our communities
- Reduces social isolation
- Helps develop and safeguard our environment and open spaces
- Increases opportunities to participate in arts, heritage, and sports activities
- Increases volunteering and civic pride
- Helps tackle causes and effects of poverty and financial hardship
- Promotes and develops community cohesion
- Provides social support over the festive period

**All grants should continue to demonstrate value for money and value to the people of Tamworth and have specific outcomes that can be recorded.**

### **Organisation Eligibility**

The Councillor Community Grant will be available to voluntary and community groups, charities, not-for-profit organisations and faith groups (N.B. faith groups applying for grants should ensure that the activities they are offering are open to all and demonstrate a wide community benefit).

- Organisations must be properly constituted, and a copy of the constitution will be required.
- Organisations must have a bank account with at least two signatories, who are not related or co-habiting, a copy of the organisation's most recent bank statement must be submitted with the application.
- Organisations must provide a safeguarding policy if working with children / vulnerable adults at risk.
- Organisations must be inclusive and allow access to, or use/participation by, the general public. Membership should not be refused on the grounds of gender, race, disability, sexual orientation, and occupation, religious, political or other beliefs. An organisation which supports individuals based on a protected characteristic should demonstrate they are inclusive on all other grounds.
- Organisations must comply with the [Prevent Duty](#) requirements.

## Councillor Community Grant Scheme Criteria

### **The following cannot apply for a Councillor Community Grant:**

- Individuals
- Private Businesses
- Any other organisation (formal or informal in structure) with the ability to distribute funds and/or assets among its members
- Statutory Organisations
- Schools/Colleges with the exception of PFA/PTA groups (if they can demonstrate a wide community benefit)

### **Examples of eligible projects include:**

- General running costs (excluding salaries but project specific sessional worker costs can be funded).
- Provision of equipment e.g., IT equipment, craft materials, furniture.
- Funding towards costs of community events/activities
- Funding towards specific projects – e.g., school holiday youth project, playscheme, coffee morning, gardening group projects.
- Small capital projects will only be considered if they can demonstrate wider-community benefit and need e.g. increase uptake of services, activities, and venue hire by the general public, charities, voluntary and community organisations and other support agencies.

### **Examples of ineligible projects include:**

- Retrospective funding for projects which have already taken place or items purchased.
- Exclusively religious activity.
- Work and projects of a party-political nature
- Travel and subsistence costs
- Guarantee against organisational loss
- Work and projects which are contrary to the Tamworth Borough Council Diversity and Equality policy
- Projects operated on a commercial or for-profit basis.
- The funding of organisations, projects or events which promote or condone extremist ideology, activities, or terrorism.

Please ensure that prior to submitting an application that you have sought any specific relevant permissions that your project requires e.g., planning permission, landlord consent, landowner consent, for projects/activities taking place on their land, or for modifications to public spaces or facilities.

### **Funding requests**

- The minimum you can apply for is £250 from each councillor, the maximum you can apply for is £1000 from each councillor.
- Applicants can apply to more than one councillor in a ward or to councillors in other wards if the project supports communities in more than one ward. However, the maximum award per project will be £3000.
- An organisation can submit more than one application in a financial year, but the application must not relate to the same project/scheme previously funded.
- If the total project cost is more than you are applying for, please provide details of other sources of income, including grants, fundraising and membership subs etc, that will be used to cover the full project cost.

## Councillor Community Grant Scheme Criteria

### Application Process

1. Organisations should first contact their local Councillor to discuss their project **BEFORE** submitting an application. Councillors should use this opportunity to ask questions and decide whether they would consider an application from the organisation.
2. Completed applications along with **ALL** supporting documents must be emailed to the following email address .....
3. The grant administrator will check the eligibility of the organisation, review and assess the application to ensure it meets the grant funding criteria. If any information is missing the applicant will be contacted and requested to submit missing information.
4. Fully completed applications will be sent to relevant councillor(s), along with any comments that will help Councillors assess the application.
5. The Councillor must decide if they support the application either in full or partially or if they reject the application.
6. If the Councillor supports the application, the grant administrator will complete a grant assessment form which will be forwarded to the Portfolio Holder for Environmental Health and Community Partnerships and the Assistant Director Partnership for consideration and approval in consultation with Assistant Director Environment, Culture and Wellbeing where appropriate.
7. Organisations will be notified of the outcome of the application. If an application is only partially approved or refused, then the reasons for this will be given to the applicant.
8. Tamworth Borough Council will only pay grants on receipt of the completed Acceptance of Grant Form. Grant payment terms will be on a grant-by-grant basis, depending on the nature of the organisation/project and level of grant awarded. Payment may be made in stages, and copy invoices, or proof of project expenditure may be requested.
9. An End of Grant Report form will be sent out to all successful applicants, and this must be completed and returned at the end of the project or end of grant date, along with copies of receipts/invoices, and photographs or feedback from the project if requested.

## Councillor Community Grant Scheme Criteria

### Standard Grant Conditions

- Grants will only be paid by Tamworth Borough Council on receipt of the completed Acceptance of Grant form. This form must be returned to Tamworth Borough Council within **seven days** of the date it was issued. Failure to do so will result in the offer of grant being withdrawn and further applications will not be accepted for twelve months.
- Acknowledgement that the grant has been received from Tamworth Borough Council shall be included on all relevant publicity material and in programmes & catalogues.
- Grants shall be used only for the purposes specified in this Notice of Confirmation, and immediate notification should be made to Tamworth Borough Council of unavoidable changes or cancellations.
- Any grant underspend must be returned to the Council.
- The council cannot fund organisations, projects or events which promote or condone extremist ideology, activities or terrorism.
- If requested by Tamworth Borough Council, a copy of the audited balance sheet and income & expenditure account must be submitted as soon as possible after the end of the financial year.
- The recipient is responsible for obtaining all licences, permission and insurances as may be necessary.
- Tamworth Borough Council cannot be held responsible for any debts or liabilities and will not be responsible to a third party.
- You agree to provide Tamworth Borough Council an end of project evaluation (template will be provided for completion).
- You agree to provide photographs of your group and/or activities to Tamworth Borough Council which may be used for publicity purposes.
- The recipient is responsible for ensuring that where the project works with children or adults at risk of abuse or neglect an appropriate safeguarding policy is in place.
- The recipient will have appropriate Disclosure & Barring Service (DBS) certifications for all staff or volunteers working with children or adults at risk of abuse or neglect.
- The grant recipient must ensure that all processing of personal data in relation to the funded activity is carried out in accordance with the Data Protection Act (1988) and the EU general data protection regulation (2018) and associated national guidance, and we will have in place appropriate policies regarding data protection and data sharing.

### Further information

Please visit our grants page at [Voluntary sector and community grants | Tamworth Borough Council](#)

## COUNCILLOR COMMUNITY GRANT APPLICATION 2024-25

### I. Organisational Details

Name of organisation: .....

Address of organisation: .....

Organisation type: .....

*Charity/ Community Interest Company/ Social Enterprise/ Voluntary/ Community organisation*

Registered charity number (if applicable) .....

Project Name: .....

Date of application: .....

Amount requested: .....

### 2. Applicant Details

Name: .....

Position in organisation: .....

Address: .....

Telephone number: .....

Email: .....

Please provide a brief summary of your organisation's key aims and objectives

# COUNCILLOR COMMUNITY GRANT APPLICATION 2024-25

## 3. Councillor(s) Details

Please provide the details of the councillor(s) you are requesting funding from

If you are applying for funding from more than one councillor, please list them all with the amount you are requesting.	Councillor(s) name(s)	Please tick to confirm you have discussed your project with each councillor named. <input checked="" type="checkbox"/>	Amount requested from each councillor

## Your Project

– please tick which of the following grant criteria your project addresses:

- Assists community with Cost-of-Living challenges
- Helps tackle the causes of inequality in our communities
- Reduces social isolation
- Helps develop and safeguard our environment and open spaces
- Increases opportunities to participate in arts, heritage, and sports activities
- Increases volunteering and civic pride
- Helps tackle causes and effects of poverty and financial hardship
- Promotes and develops community cohesion
- Considers outstanding individuals or groups who by achievement in arts, culture or sports support and promote Tamworth as a place

Project Start Date .....

Project End Date .....

## **COUNCILLOR COMMUNITY GRANT APPLICATION 2024-25**

### **4. Project Details**

a) Describe your project – please include the following details:

- The specific activities you plan to carry out with the grant
- Project location – ward name and venue details
- Who the beneficiaries of your project will be
- Who will deliver the project e.g., volunteers /staff /sessional worker

## COUNCILLOR COMMUNITY GRANT APPLICATION 2024-25

### Your Project (continued)

b) Tell us why your project is needed. Please include:

- Specific issues/problems and how your project addresses these
- Any consultation you have undertaken with people who will benefit from the project

### 5. Project Financial Breakdown

<b>Section A: Project Costs</b>	
Please list the costs of the whole project	
<b>Description</b> <i>e.g., equipment, leaflets, sessional worker, room hire etc.</i>	<b>Amount (£)</b>
<b>Total Project Cost:</b>	
<b>Section B: Project Income</b>	
Please list the anticipated income for the whole project, including the total amount you are requesting through the Councillor Grant Scheme, organisation reserves, fundraising, funding from other sources.	
<b>Description</b>	<b>Amount (£)</b>
<b>Total Project Cost:</b>	
How will you cover the shortfall if you are not awarded the full amount requested via the Councillor Grant Scheme?	



## COUNCILLOR COMMUNITY GRANT APPLICATION 2024/25

### 6. Bank Account Details

Organisation's Account Name

\_\_\_\_\_

**(Please ensure this is the exact name that appears on your organisation's bank account)**

Bank Account No \_\_\_\_\_ Bank Sort Code No \_\_\_\_\_

Branch Bank address \_\_\_\_\_

Authorised signatories for this account:

1 \_\_\_\_\_

2 \_\_\_\_\_

Please note signatories must not be related or co-habiting.

Please state your current balance/reserves:

£ \_\_\_\_\_ Date \_\_\_\_\_

**A copy of the organisations most recent bank statement must be submitted.**

### 7. Supporting Documents

**Before submitting your application, please ensure that you have attached the following supporting documents:**

- A copy of your most recent bank statement
- A copy of your organisation's Constitution
- A Safeguarding Children Policy (this is required for all projects working with any children or young people)
- Adults at Risk Policy (this is required for all projects working with vulnerable adults)
- Public Liability Insurance

## **COUNCILLOR COMMUNITY GRANT APPLICATION 2024/25**

### **8. Privacy Notice**

Tamworth Borough Council is the Data Controller for all personal data collected in this application, processing is necessary for the performance of a task carried out in the public interest. We collect your personal information to allow us to process your grant application, provide administration for award panels and to process payment for successful applications. We will use it to ensure you are meeting the conditions of your grant award. We will use it to communicate with you regarding contact you have had with us and to document your relationship with us. We may use some of your personal information to publicise grants we have awarded through press releases and social media. All awarded grants are publicised on our website.

The information includes the name of the organisation or person (where individuals have applied), amount of grant awarded, and the details of the project funded. With your consent, we will use your information to inform you of grant funding opportunities. We may share your personal information with third parties where required to by law or where it is necessary to process your application. Full details about the types of personal information we collect, the purpose we collect it, third parties we share it with, third party providers, and how we maintain the security of your information, can be found at <https://www.tamworth.gov.uk/privacy-notice>. A hard copy is available upon request. Please ensure you read our fair processing notice before submitting your personal information to us. Information you give us will be kept for no longer than necessary.

Our [Retention Schedule](#) can be found on the same page. If you have a concern about the way that we are collecting or using your personal data, we ask that you contact us in the first instance. Our Data Protection Officer can be contacted on [data-protection@tamworth.gov.uk](mailto:data-protection@tamworth.gov.uk). Alternatively, you can contact the Information Commissioner's Office. You have certain rights under UK Data Protection law. For information on your rights, please visit the Information Commissioner's Officer Website [www.ico.org.uk](http://www.ico.org.uk).

**Please forward application and supporting documents to Partnership Officer Grants and Funding [stephanie-ivey@tamworth.gov.uk](mailto:stephanie-ivey@tamworth.gov.uk)**

### **9. Declaration**

I declare, on behalf of the Organisation, that:

- The application is submitted with the support of the organisation's management committee.
- To the best of my knowledge and belief the information I have given is correct.
- The organisation has appropriate and adequate insurances in place.
- Where applicable the organisation carries out and manages **appropriate** Disclosure and Barring Service checks on **eligible** individuals whom it engages to deliver the project.
- By applying for funding, I agree to complete an end of project evaluation form on the activities undertaken and provide details on the benefits the grant has brought.

Please note if funding is awarded all receipts for expenditure must be retained and produced upon request.

**Signature of applicant:**

**Print name:**

**Date:**

**Office held:**

**Signature of Ward Councillor Authorising:**